



# Installing SuperStack® II NETBuilder® SI Interface Modules

<http://www.3com.com/>

Part No. 09-1361-001  
Published July 1998

**3Com Corporation ■ 5400 Bayfront Plaza ■ Santa Clara, California ■ 95052-8145**

**Copyright © 3Com Corporation, 1998.** All rights reserved. No part of this documentation may be reproduced in any form or by any means or used to make any derivative work (such as translation, transformation, or adaptation) without permission from 3Com Corporation.

3Com Corporation reserves the right to revise this documentation and to make changes in content from time to time without obligation on the part of 3Com Corporation to provide notification of such revision or change.

3Com Corporation provides this documentation without warranty of any kind, either implied or expressed, including, but not limited to, the implied warranties of merchantability and fitness for a particular purpose. 3Com may make improvements or changes in the product(s) and/or the program(s) described in this documentation at any time.

**UNITED STATES GOVERNMENT LEGENDS:**

If you are a United States government agency, then this documentation and the software described herein are provided to you subject to the following restricted rights:

**For units of the Department of Defense:**

*Restricted Rights Legend:* Use, duplication or disclosure by the Government is subject to restrictions as set forth in subparagraph (c) (1) (ii) for restricted Rights in Technical Data and Computer Software clause at 48 C.F.R. 52.227-7013. 3Com Corporation, 5400 Bayfront Plaza, Santa Clara, California 95052-8145.

**For civilian agencies:**

*Restricted Rights Legend:* Use, reproduction or disclosure is subject to restrictions set forth in subparagraph (a) through (d) of the Commercial Computer Software - Restricted Rights Clause at 48 C.F.R. 52.227-19 and the limitations set forth in 3Com Corporation's standard commercial agreement for the software. Unpublished rights reserved under the copyright laws of the United States.

If there is any software on removable media described in this documentation, it is furnished under a license agreement included with the product as a separate document, in the hard copy documentation, or on the removable media in a directory file named LICENSE.TXT. If you are unable to locate a copy, please contact 3Com and a copy will be provided to you.

Unless otherwise indicated, 3Com registered trademarks are registered in the United States and may or may not be registered in other countries.

3Com, NETBuilder, and SuperStack are registered trademarks of 3Com Corporation.

Other brand and product names may be registered trademarks or trademarks of their respective holders.



*The network serial connector and the ISDN cable are TNV connection points as defined by EN 41 003. 10BASE-T, 10BASE2, Console, and Flex-WAN ports are SELV ports as defined by EN 41 003.*

**Electromagnetic Compatibility Information**

**Classes**

Various national agencies (in the United States, The Federal Communications Commission (FCC)) govern the levels of electromagnetic emissions from digital devices. Electromagnetic emissions can interfere with radio and television transmission. To reduce the risk of harmful interference these agencies have established requirements for manufacturers of digital devices

The manufacturer of a digital device must test and label a product to inform an end-user of the maximum emission level from the product when used in accordance with its instructions. The emission levels encountered are classified as Class A or Class B. A system that meets the Class A requirement can be marketed for use in an industrial or a commercial area. A system that meets the more stringent Class B requirement can be marketed for use in a residential area in addition to an industrial or a commercial area.

The end user is generally held responsible for ensuring that his system is suitable for its environment as stated in the above paragraph and bears the financial responsibility for correcting any harmful interference.

**Modifications**

Modifications or changes made to this device, and not approved by 3Com, may void the authority granted by the FCC, or other such agency, to operate this equipment.

**Shielded Cables**

Connections between 3Com equipment and other equipment and peripherals must be made using shielded cables in order to maintain compliance with FCC, and other agency, electromagnetic frequency emissions limits. This statement does not apply to the ISDN cable or 10BASE-T cables. For information on shielded cables, refer to the *WAN Cabling and Connectivity Guide*.

**Federal Communications Commission (FCC) Notice**

This equipment has been tested and found to comply with the limits for a Class B digital device, pursuant to Part 15 of the FCC rules. These limits are designed to provide reasonable protection against harmful interference in a residential installation. This equipment generates, uses and can radiate radio frequency energy and, if not installed and used in accordance with the instruction manual, may cause harmful interference to radio communications. However, there is no guarantee that interference will not occur in a particular installation. If this equipment does cause harmful interference to radio or television reception, which can be determined by turning the equipment off and on, the user is encouraged to try and correct the interference by one or more of the following measures:

- Reorient or relocate the receiving antenna.
- Increase the separation between the equipment and the receiver.
- Connect the equipment into an outlet on a circuit different from that to which the receiver is connected.
- Consult the dealer or an experienced radio/TV technician for help.

In order to meet FCC Class B limits, this equipment must be used only with cables which comply with IEEE 802.3.

The user may find the following booklet prepared by the Federal Communication Commission helpful:

*How to Identify and Resolve Radio-TV Interference Problems*

This booklet is available from the U.S. Government Printing Office, Washington, DC 20402, Stock No. 004-000-00345-4.

**Canadian Notice**

This digital apparatus does not exceed the Class B limits for radio noise emissions from digital apparatus as set out in the interference-causing equipment standard entitled "Digital Apparatus," ICES-003 of the Department of Communications.

**Avis Canadien**

Cet appareil numérique respecte les limites bruits radioélectriques applicables aux appareils numériques de Classe B prescrites dans la norme sur le matériel brouilleur: "Appareils Numériques", NMB-003 édictée par le ministre des Communications.

**Canadian Certification Notice**

The Industry Canada label identifies certified equipment. This certification means that the equipment meets certain telecommunications network protective, operational, and safety requirements. The Department does not guarantee the equipment will operate to the users' satisfaction.

Before installing this equipment, users should ensure that it is permissible to be connected to the facilities of the local telecommunications company. The equipment must also be installed using an acceptable method of connection. In some cases, the inside wiring associated with a single line individual service may be extended by means of a certified connector assembly. The customer should be aware that compliance with the above conditions may not prevent degradation of service in some situations.

Repairs to certified equipment should be made by an authorized Canadian maintenance facility designated by the supplier. Any repairs or alterations made by the user to this equipment, or equipment malfunctions, may give the telecommunications company cause to request the user to disconnect the equipment.

Users should ensure for their own protection that the electrical ground connections of the power utility, telephone lines, and internal metallic water pipe system, if present, are connected together. This precaution may be particularly important in rural areas.



**CAUTION:** *Users should not attempt to make electrical ground connections by themselves, but should contact the appropriate inspection authority or an electrician, as appropriate.*

**FCC Part 68**

This equipment complies with Part 68 of the Federal Communications Commission (FCC) rules. On the product is a label that contains the FCC registration number for this device. If requested, this information must be provided to the telephone company.

This equipment is designed to be connected to the telephone network or premises wiring using a compatible modular jack which is Part 68 compliant. See installation instructions for details.

If this device causes harm to the telephone network, the telephone company will notify you in advance that temporary discontinuance of service may be required. The telephone company may request that you disconnect the equipment until the problem is resolved.

The telephone company may make changes in its facilities, equipment, operations or procedures that could affect the operation of this equipment. If this happens, the telephone company will provide advance notice in order for you to make necessary modifications to maintain uninterrupted service.

**CSU/DSU Module**

This device is intended to connect to Digital Data Services in the U.S.A. Please inform the telephone company of the following information pertaining to this device before installation. Note that this device does not handle encoded analogue content and therefore does not require that a Digital Affidavit be filed with the telephone company.

|                                |                      |
|--------------------------------|----------------------|
| FCC Registration Number        | See label on product |
| Required connector (USOC)      | RJ-48S               |
| Service Order Code (SOC)       | 6.OY                 |
| Facility Interface Codes (FIC) | 04DUS-56, 04DUS-64   |

**NTI Module**

This device is intended to connect to ISDN Basic Rate Service in the U.S.A. Please inform the telephone company of the following information pertaining to this device before installation. Note that this device does not handle encoded analogue content and therefore does not require that a Digital Affidavit be filed with the telephone company.

|                                |                      |
|--------------------------------|----------------------|
| FCC Registration Number        | See label on product |
| Required Connector (USOC)      | RJ-49                |
| Service Order Code (SOC)       | 6.OY                 |
| Facility Interface Codes (FIC) | 02IS5                |

**CE Notice**

Marking by the symbol **CE0344X** indicates compliance of this equipment with the EMC, Telecom and Low Voltage Directives of the European Community. Such marking is indicative that this equipment meets or exceeds the following technical standards:

**EN55022** — Limits and methods of measurement of radio interference characteristics of information technology equipment.

**EN50082.1** — Electromagnetic compatibility - generic immunity standard part 1: residential, commercial, and light industrial.

**CTR2** — Connection of WAN ports to X.25 packet switching and X.21 leased line services.

**CTR3** — Connection to Basic Rate ISDN services.

**EN 60950** — Safety of Information Technology Equipment including Electrical Business Equipment.

**EN 41003** — Particular safety requirements for electrical equipment to be connected to Telecom networks.

**Software contained in this product may contain encrypted product which may not be exported or transferred from the U.S. or Canada without an approved U.S. Department of Commerce export license.**

# INSTALLING OR REMOVING AN INTERFACE MODULE

This document describes how to install or remove interface modules in SuperStack II NETBuilder SI bridge/routers.

The following table lists each model number and the interface module it represents.

---

| <b>Model</b> | <b>Module Installed</b>                |
|--------------|--|
| 43x/53x      | ISDN S/T port with no interface module |
| 44x/54x      | ISDN U interface module                |
| 45x/55x      | 56/64 Kbps CSU/DSU module              |
| 46x/56x      | T1/FT1 CSU/DSU module                  |

---

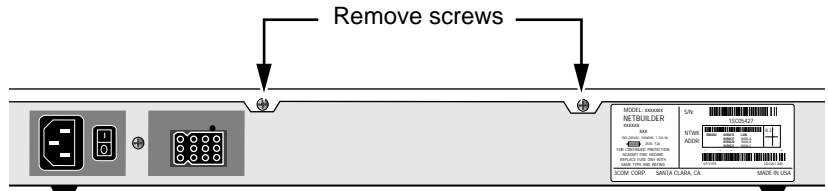
You can change any model 4xx bridge/router to another model 4xx bridge router, or any model 5xx bridge/router to another model 5xx bridge/router, by installing, removing, or replacing the interface module.

---

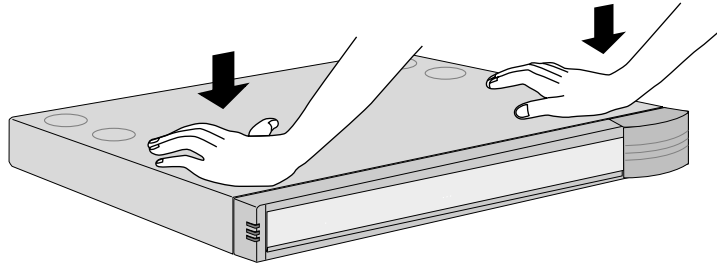
## Removing the Cover

To remove the cover, follow these steps:

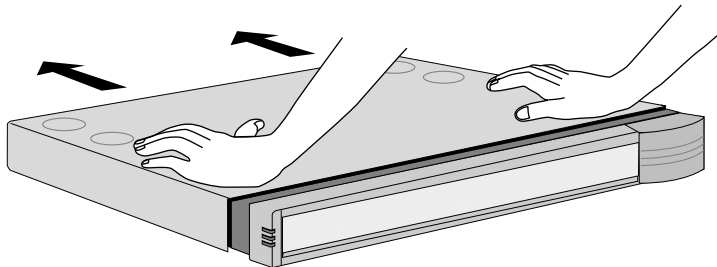
- 1 Remove the power cord and all cables from the chassis.**
- 2 If the bridge/router is mounted with brackets, unmount it and remove the brackets.**
- 3 Remove the two screws from the back of the chassis.**



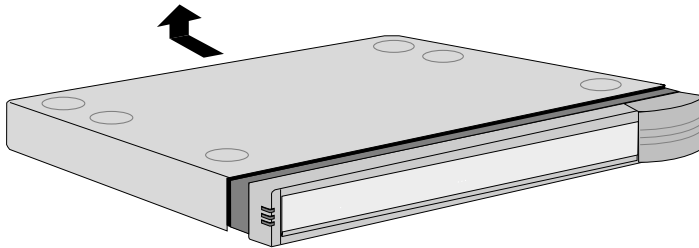
**4 Remove the cover.**



Push down on cover with both hands



Slide cover back slightly

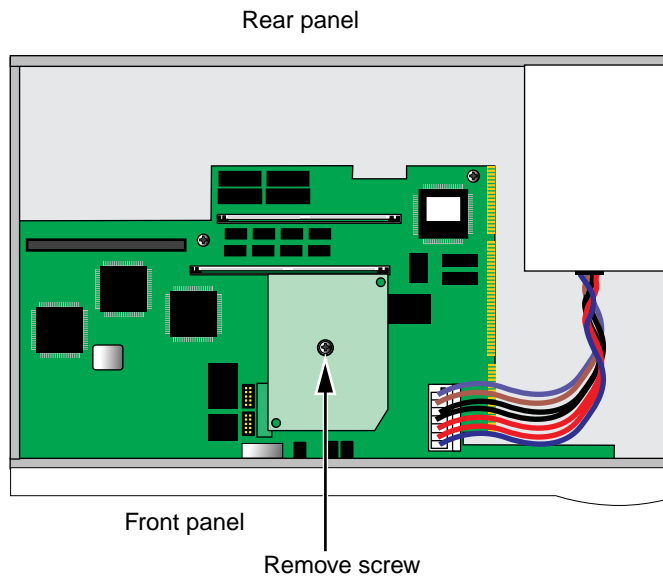


Lift cover away from chassis

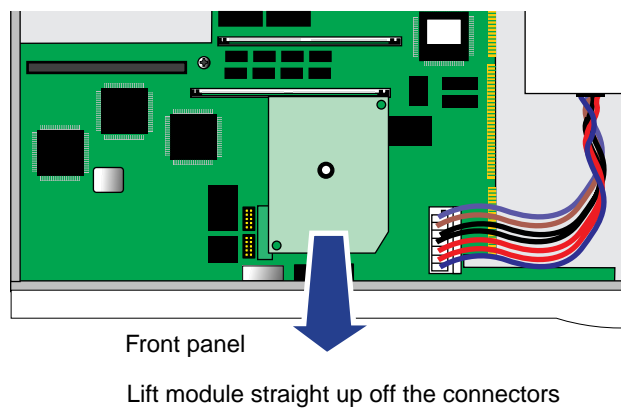
## Removing an Existing Module (Model 4xx)

To remove an existing module from a model 4xx bridge/router, follow these steps:

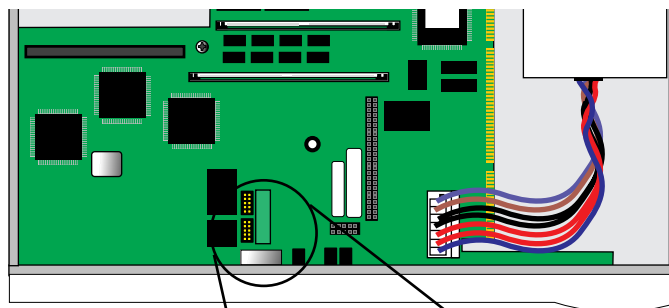
- 1 Remove the screw from the standoff.



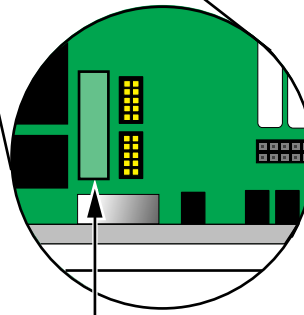
- 2 Remove the module.



- 3 If you are not installing another module, change the jumper to the left-hand set of pins and reinstall the screw on the standoff.



Front panel

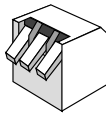


Move the jumper to the left-hand set of pins

- 4 Reinstall the cover and the cover screws.



**CAUTION:** The DIP switches should all be in the down position. The DIP switches are accessible through an opening on the side of the chassis.



DIP switches should all be in the down position

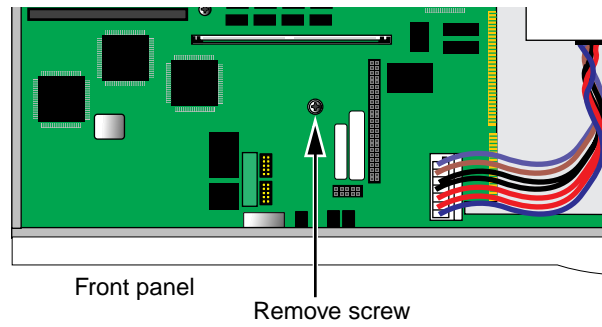
- 5 If the bridge/router was mounted with brackets, reinstall the brackets and remount it.
- 6 Reconnect the power cord and all cables.



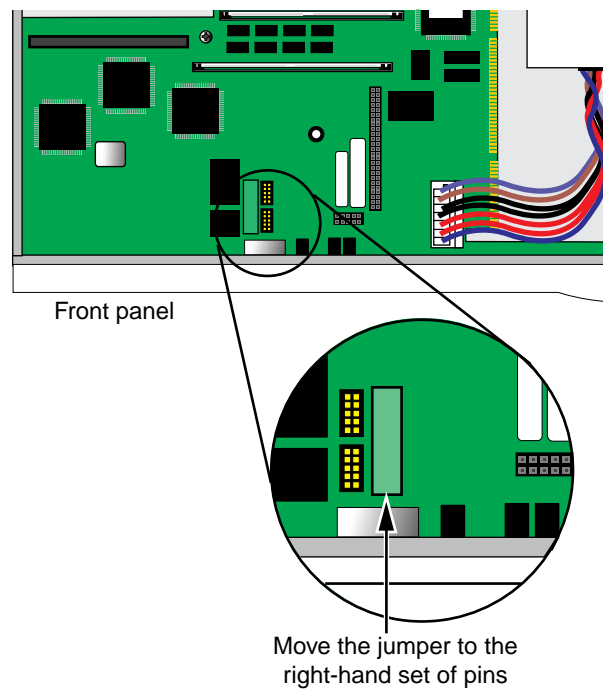
## Installing a New Module (Model 4xx)

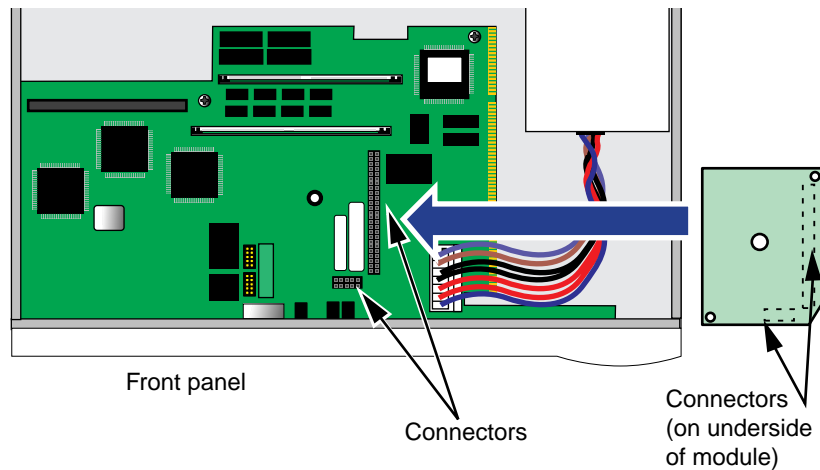
To install a new module in a model 4xx bridge/router, follow these steps:

- 1 Remove the screw from the standoff if necessary.



- 2 Move the jumper to the right-hand set of pins.

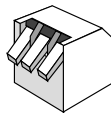


**3 Insert the new module.**

Install module by matching connectors

**4 Reinstall the screw on the standoff.****5 Reinstall the cover and the cover screws.**

**CAUTION:** The DIP switches should all be in the down position. The DIP switches are accessible through an opening on the side of the chassis.



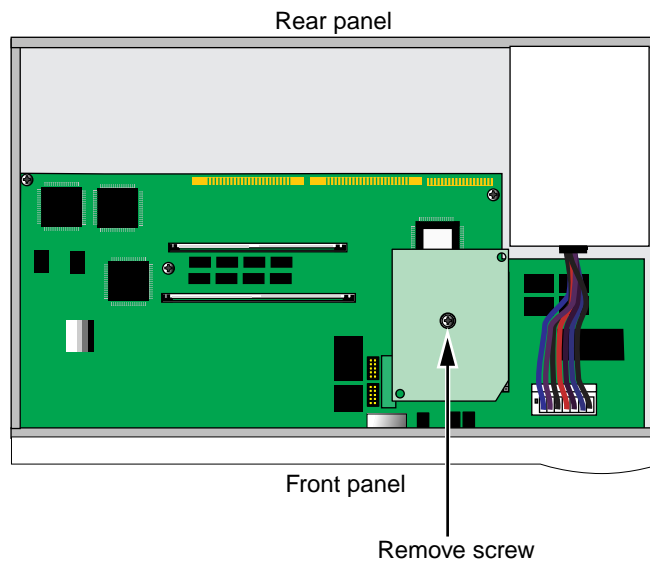
DIP switches should all be in the down position

**6 If the bridge/router was mounted with brackets, reinstall the brackets and remount it.****7 Reconnect the power cord and all cables.**

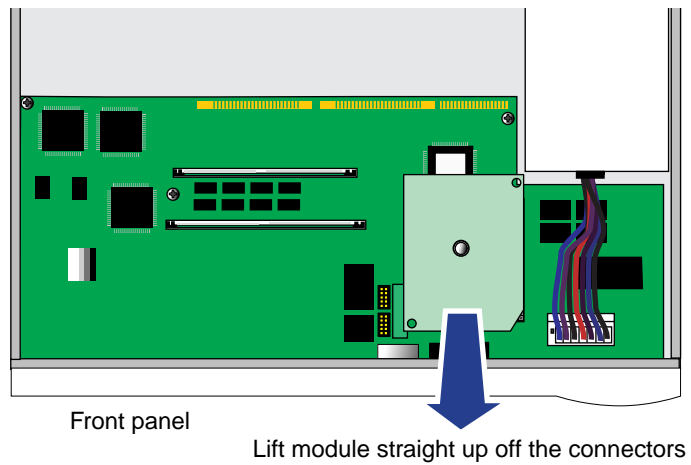
## Removing an Existing Module (Model 5xx)

To remove an existing module from a model 5xx bridge/router, follow these steps:

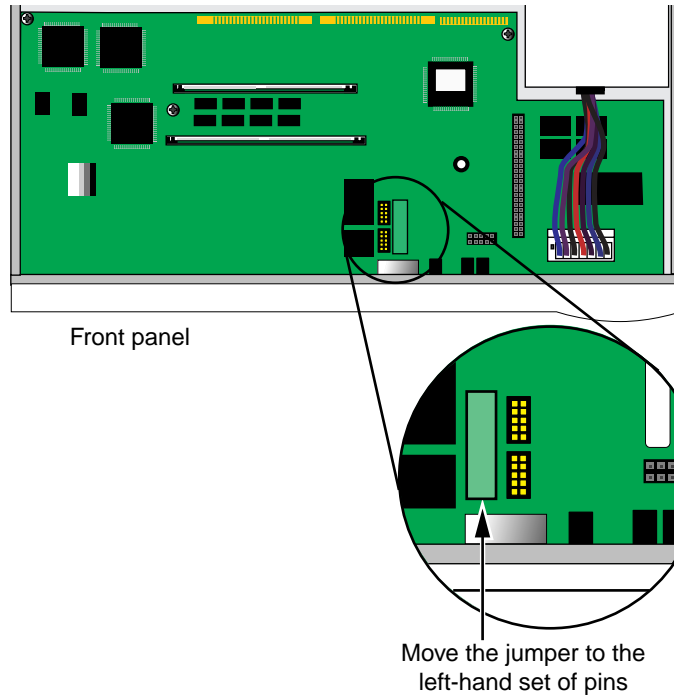
- 1 Remove the screw from the standoff.



- 2 Remove the module.



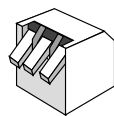
- 3 If you are not installing another module, change the jumper to the left-hand set of pins and reinstall the screw on the standoff.



- 4 Reinstall the cover and the cover screws.



**CAUTION:** The DIP switches should all be in the down position. The DIP switches are accessible through an opening on the side of the chassis.



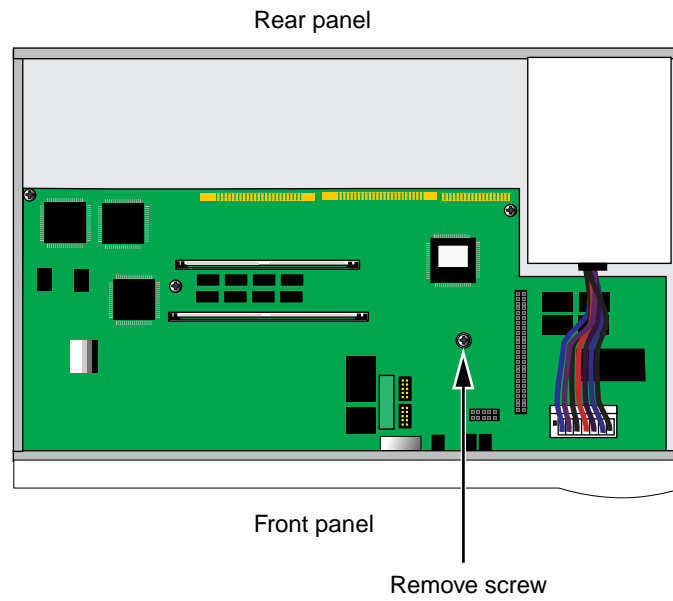
DIP switches should all be in the down position

- 5 If the bridge/router was mounted with brackets, reinstall the brackets and remount it.
- 6 Reconnect the power cord and all cables.

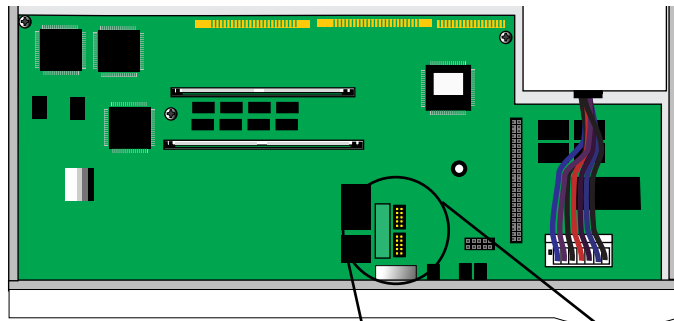
## Installing a New Module (Model 5xx)

To install a new module in a model 5xx bridge/router, follow these steps:

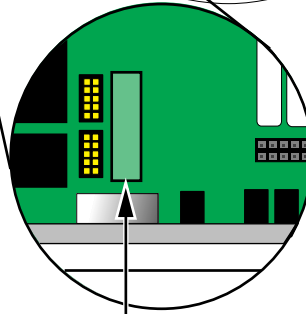
- 1 Remove the screw from the standoff if necessary.



2 Move the jumper to the right-hand set of pins.

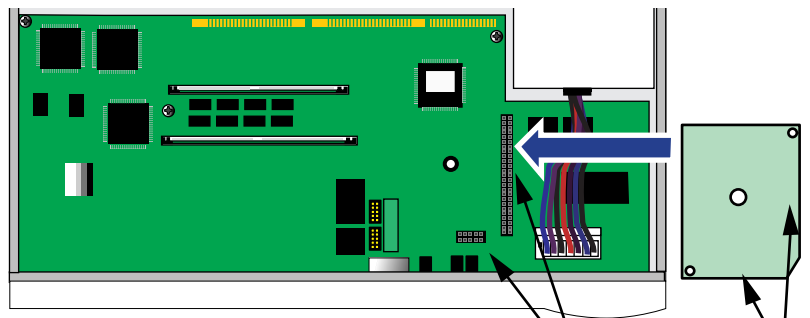


Front panel



Move the jumper to the right-hand set of pins

3 Insert the new module.



Front panel

Connectors

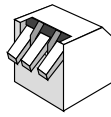
Connectors (on underside of module)

Install module by matching connectors

- 4 Reinstall the screw on the standoff.
- 5 Reinstall the cover and the cover screws.



**CAUTION:** *The DIP switches should all be in the down position. The DIP switches are accessible through an opening on the side of the chassis.*



DIP switches should all be in the down position

- 6 If the bridge/router was mounted with brackets, reinstall the brackets and remount it.
- 7 Reconnect the power cord and all cables.





## Limited Warranty

**HARDWARE:** 3Com warrants its hardware products to be free from defects in workmanship and materials, under normal use and service, for the following lengths of time from the date of purchase from 3Com or its Authorized Reseller:

|                                    |                 |
|------------------------------------|-----------------|
| <b>Internetworking products</b>    | <b>One year</b> |
| <b>Other hardware products</b>     | <b>One year</b> |
| <b>Spare parts and spares kits</b> | <b>90 days</b>  |

If a product does not operate as warranted during the applicable warranty period, 3Com shall, at its option and expense, repair the defective product or part, deliver to Customer an equivalent product or part to replace the defective item, or refund to Customer the purchase price paid for the defective product. All products that are replaced will become the property of 3Com. Replacement products may be new or reconditioned. Any replaced or repaired product or part has a ninety (90) day warranty or the remainder of the initial warranty period, whichever is longer.

3Com shall not be responsible for any software, firmware, information, or memory data of Customer contained in, stored on, or integrated with any products returned to 3Com pursuant to any warranty.

**STANDARD WARRANTY SERVICE:** Standard warranty service for hardware products may be obtained by delivering the defective product, accompanied by a copy of the dated proof of purchase, to 3Com's Corporate Service Center or to an Authorized 3Com Service Center during the applicable warranty period. Standard warranty service for software products may be obtained by telephoning 3Com's Corporate Service Center or an Authorized 3Com Service Center, within the warranty period. Products returned to 3Com's Corporate Service Center must be pre-authorized by 3Com with a Return Material Authorization (RMA) number marked on the outside of the package, and sent prepaid, insured, and packaged appropriately for safe shipment. The repaired or replaced item will be shipped to Customer, at 3Com's expense, not later than thirty (30) days after receipt by 3Com.

**WARRANTIES EXCLUSIVE:** IF A 3COM PRODUCT DOES NOT OPERATE AS WARRANTED ABOVE, CUSTOMER'S SOLE REMEDY SHALL BE REPAIR, REPLACEMENT, OR REFUND OF THE PURCHASE PRICE PAID, AT 3COM'S OPTION. THE FOREGOING WARRANTIES AND REMEDIES ARE EXCLUSIVE AND ARE IN LIEU OF ALL OTHER WARRANTIES, EXPRESS OR IMPLIED, EITHER IN FACT OR BY OPERATION OF LAW, STATUTORY OR OTHERWISE, INCLUDING WARRANTIES OF MERCHANTABILITY AND FITNESS FOR A PARTICULAR PURPOSE. 3COM NEITHER ASSUMES NOR AUTHORIZES ANY OTHER PERSON TO ASSUME FOR IT ANY OTHER LIABILITY IN CONNECTION WITH THE SALE, INSTALLATION, MAINTENANCE OR USE OF ITS PRODUCTS.

3COM SHALL NOT BE LIABLE UNDER THIS WARRANTY IF ITS TESTING AND EXAMINATION DISCLOSE THAT THE ALLEGED DEFECT IN THE PRODUCT DOES NOT EXIST OR WAS CAUSED BY CUSTOMER'S OR ANY THIRD PERSON'S MISUSE, NEGLIGENCE, IMPROPER INSTALLATION OR TESTING, UNAUTHORIZED ATTEMPTS TO REPAIR, OR ANY OTHER CAUSE BEYOND THE RANGE OF THE INTENDED USE, OR BY ACCIDENT, FIRE, LIGHTNING, OR OTHER HAZARD.

**LIMITATION OF LIABILITY:** IN NO EVENT, WHETHER BASED IN CONTRACT OR TORT (INCLUDING NEGLIGENCE) SHALL 3COM BE LIABLE FOR INCIDENTAL, CONSEQUENTIAL, INDIRECT, SPECIAL, OR PUNITIVE DAMAGES OF ANY KIND, OR FOR LOSS OF REVENUE, LOSS OF BUSINESS, OR OTHER FINANCIAL LOSS ARISING OUT OF OR IN CONNECTION WITH THE SALE, INSTALLATION, MAINTENANCE, USE, PERFORMANCE, FAILURE, OR INTERRUPTION OF ITS PRODUCTS, EVEN IF 3COM OR ITS AUTHORIZED RESELLER HAS BEEN ADVISED OF THE POSSIBILITY OF SUCH DAMAGES.

Some states do not allow the exclusion of implied warranties or the limitation of incidental or consequential damages for consumer products, so the above limitations and exclusions may not apply to you. This warranty gives you specific legal rights which may vary from state to state.

**GOVERNING LAW:** This Limited Warranty shall be governed by the laws of the state of California.

**3Com Corporation**  
5400 Bayfront Plaza  
Santa Clara, CA 95052-8145  
(408) 764-5000

