

Cisco 3600/2600 Series ISDN BRI Connectivity Options (NM-4B-S/T, NM-4B-U, NM-8B-S/T, NM-8B-U, WIC-1B-S/T, WIC-1B-U)

Figure 1 NM-4B-S/T, NM-4B-U, NM-8B-S/T, NM-8B-U, WIC-1B-S/T, WIC-1B-U



The astonishing versatility of the Cisco 3600/2600 router series is highlighted by its broad support of Integrated Services Digital Network Basic Rate Interface (ISDN BRI) connectivity. Customers can choose among six options to precisely fit their requirements:

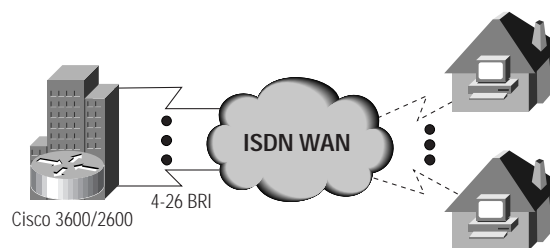
Network Modules

- NM-4B-S/T—Four-port ISDN BRI network module (S/T interface)
- NM-4B-U—Four-port ISDN BRI network module with integrated NT1 (U interface)
- NM-8B-S/T—Eight-port ISDN BRI network module (S/T interface)
- NM-8B-U—Eight-port ISDN BRI network module with integrated NT1 (U interface)

WAN Interface Cards

- WIC-1B-S/T—One-port ISDN BRI (S/T interface)
- WIC-1B-U—One-port ISDN BRI with integrated NT1 (U interface)

Figure 2 Low-Density ISDN Applications



The network modules provide various port densities to meet customer requirements at various price points. The optional, integrated NT1 lets customers consolidate customer premises equipment (CPE) to provide multifunction dial access server, router, and other capabilities within the Cisco 3600/2600 series in power branch office environments.

The WAN interface card option offers a single ISDN BRI port (with optional NT1). The WAN interface card inserts into a mixed-media network module (NM-1E2W, NM-2E2W, NM-1E1R2W) or into the 2600 chassis. The ability to add BRI connectivity via a WAN interface card lets administrators maximize valuable slot space while providing additional connectivity options on the same module (for 3600), such as Ethernet.

For midrange, high-density ISDN BRI applications, the Cisco 3640 provides superior performance and port densities. For example, a fully configured Cisco 3640 with two Ethernet ports can support 26 ISDN BRI ports on the same chassis. Table 1 outlines the maximum configurations of each module option for the Cisco 3600/2600 platforms.

Table 1 Physical Limitation of ISDN BRI Modules per Chassis

Type of Module	Number of Modules per Chassis		
	Cisco 3640	Cisco 3620	Cisco 2600
NM-4B-S/T	3	1	1
NM-4B-U	3	1	1
NM-8B-S/T	3	1	1
NM-8B-U	3	1	1
WIC-1B-S/T	8	4	2
WIC-1B-U	8	4	2

Table 2 Cisco IOS® Software Release Requirements for ISDN BRI network modules

Cisco IOS Requirements ¹	
NM-4B-S/T	11.1.(8)AA or later
NM-4B-U	11.1.(8)AA or later
NM-8B-S/T	11.1.(8)AA or later
NM-8B-U	11.1.(8)AA or later
WIC-1B-S/T	11.2.(5)P or later
WIC-1B-U	11.2.(5)P or later

1. 2600 IOS 11.(3)4T or later

Table 3 Technical Specifications

	NM-4B-S/T, NM-4B-U	NM-8B-S/T, NM-8B-U	WIC-1B-S/T, WIC-1B-U
Dimensions (H x W x D)	1.55 x 7.10 x 7.2	1.55 x 7.10 x 7.2	1.55 x 7.10 x 7.2
Weight	2 lbs. max	2 lbs. max	2 lbs. max
Homologation			
Environmental Conditions	Op. temp 32–104 F (0–40 C), Non Op temp -13–158 F (-25–70 C)	Op. temp 32–104 F (0–40 C), Non Op temp -13–158 F (-25–70 C)	Op. temp 32–104 F (0–40 C), Non Op temp -13–158 F (-25–70 C)
Relative Humidity	5–95%	5–95%	5–95%
Safety			
Protocols Supported	Full Cisco IOS support in Release 11.2 and 11.3		
EMI	Class B EMI / Class A EMI	Class B EMI / Class A EMI	Class B EMI / Class B EMI

Cabling—RJ-45 connectors

LEDs—Network module status indicator, status LEDs for each B Channel and NT1

Network interfaces—All supported Cisco 3600/2600 network interfaces



Corporate Headquarters
Cisco Systems, Inc.
170 West Tasman Drive
San Jose, CA 95134-1706
USA
<http://www.cisco.com>
Tel: 408 526-4000
800 553-NETS (6387)
Fax: 408 526-4100

European Headquarters
Cisco Systems Europe s.a.r.l.
Parc Evolic, Batiment L1/L2
16 Avenue du Quebec
Villebon, BP 706
91961 Courtaboeuf Cedex
France
<http://www-europe.cisco.com>
Tel: 33 1 69 18 61 00
Fax: 33 1 69 28 83 26

Americas Headquarters
Cisco Systems, Inc.
170 West Tasman Drive
San Jose, CA 95134-1706
USA
<http://www.cisco.com>
Tel: 408 526-7660
Fax: 408 527-0883

Asia Headquarters
Nihon Cisco Systems K.K.
Fuji Building, 9th Floor
3-2-3 Marunouchi
Chiyoda-ku, Tokyo 100
Japan
<http://www.cisco.com>
Tel: 81 3 5219 6250
Fax: 81 3 5219 6001

Cisco Systems has more than 200 offices in the following countries. Addresses, phone numbers, and fax numbers are listed on the

Cisco Connection Online Web site at <http://www.cisco.com/offices>.

Argentina • Australia • Austria • Belgium • Brazil • Canada • Chile • China • Colombia • Costa Rica • Croatia • Czech Republic • Denmark • Dubai, UAE
Finland • France • Germany • Greece • Hong Kong • Hungary • India • Indonesia • Ireland • Israel • Italy • Japan • Korea • Luxembourg • Malaysia
Mexico • The Netherlands • New Zealand • Norway • Peru • Philippines • Poland • Portugal • Puerto Rico • Romania • Russia • Saudi Arabia • Singapore
Slovakia • Slovenia • South Africa • Spain • Sweden • Switzerland • Taiwan • Thailand • Turkey • Ukraine • United Kingdom • United States • Venezuela